

# PERSONALITY ASSESSMENT REPORT



## MyPeer Details:

Name	Rohit Verma
College	IIT Delhi

# ASSESSMENT FRAMEWORK

1. Core  
Personality  
Traits
2. Workplace Fit
3. Working Style





CORE  
PERSONALITY  
TRAITS



# Core Personality Traits

We evaluated you holistically and the results show your personality is a unique blend of the basic Core Personality Traits. Let us see what is in store for you!

Core Personality Traits - These are inbuilt characteristics in an individual which greatly influence their behaviour, decisions or simply their way of dealing with situations.

The following are the core personality traits -

1. **Perfectionism** - It is the desire to be flawless and beyond criticism
2. **Care** - It means to help those in need before thinking about oneself
3. **Ambition** - It means to focus strongly on achieving goals
4. **Individuality**- It is the desire to seek uniqueness and beauty in everything
5. **Curiosity** - It is the quest for knowledge, information and intellect
6. **Commitment** - It is synonyms to loyalty with a strong focus on security
7. **Enthusiasm** - It is the desire to be free, unbounded and eagerness to explore
8. **Power** - It is the desire to seek authority being straightforward and confident
9. **Agreeableness**- It means to be able to empathize and coordinate with others



**Perfectionism**



**Care**

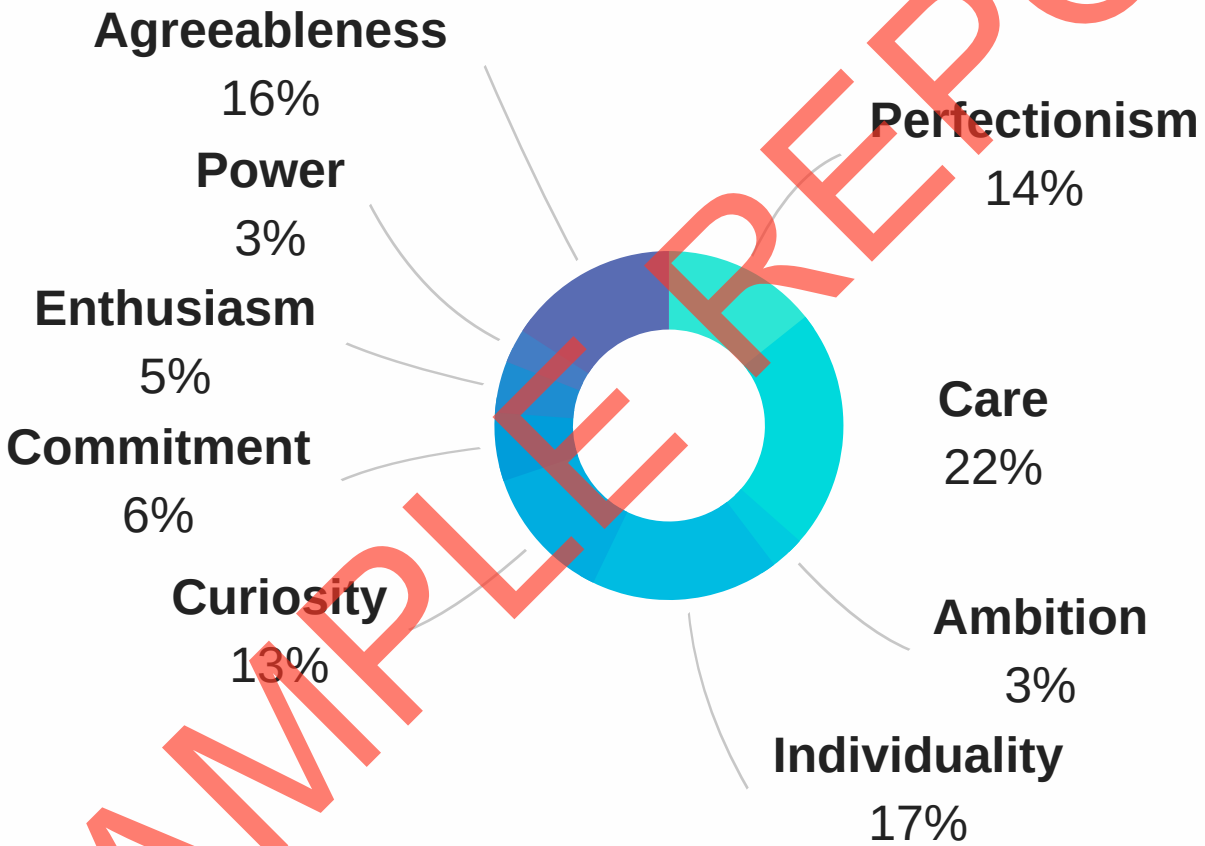


**Ambition**



**Individuality**

# Your Profile



**Curiosity**



**Commitment**



**Enthusiasm**

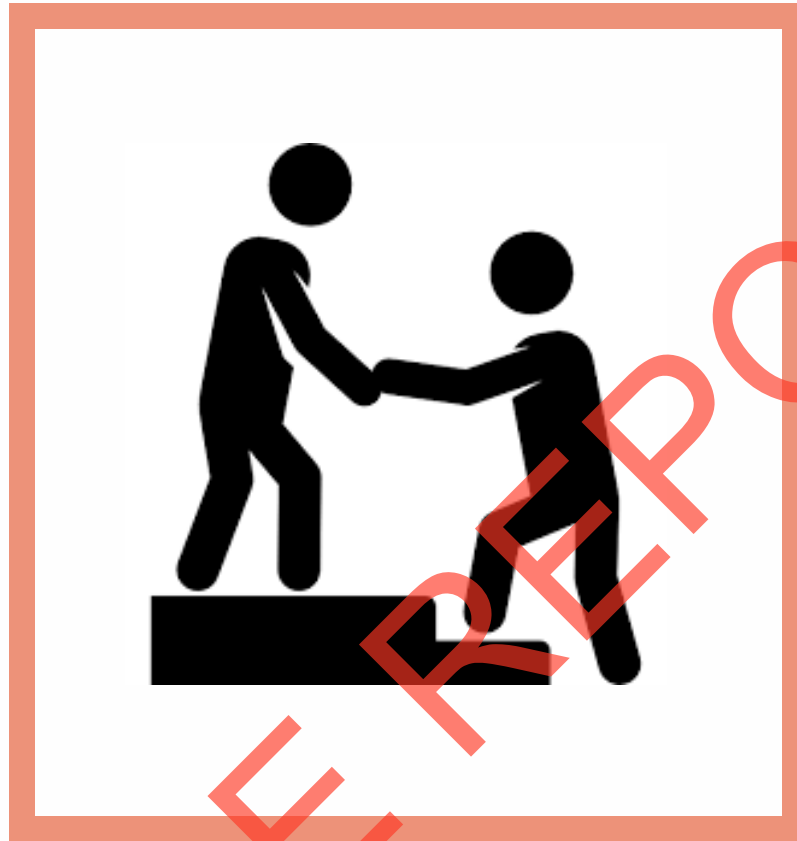


**Power**



**Agreeableness**

# Dominant Trait



## CARE

You have a distinctive mix of all the 9 core personality traits, among which **Care** is the dominant trait. This means that mostly you exhibit **Care** in your behavior, decisions or the way you deal with life situations. Other traits are not very prominent in your personality but play a small part.

# CARE TRAIT

## Introduction

Your personality is the most caring and relationship-oriented personality who seek acceptance and appreciation. You are generous, people pleasing and possessive.

### 1 STRENGTHS

1

External(behavioral): empathetic, friendly, generous, caring, expressive, quick to support or help others, good communicator  
Internal: sincere, warm and open, popular, nice, dependent, humble, non judgmental

### 2 DIFFICULTIES

2

External(behavioral): people pleasing, dependent, generous, caring, expressive, quick to support or help others, good communicator  
Internal: sincere, warm and open, popular, nice, dependent, humble, non judgmental

### 3 KEY MOTIVATION AND AREA OF FOCUS

3

Key Motivations: of being loved and needed, want to be liked  
Area of focus: on others needs and desires

### 4 FEARS AND CHALLENGES

4

Internal: fear of being rejected, fear of being alone, fear of being unloved  
External: fear of being rejected, fear of being alone, fear of being unloved



---

# WORKPLACE FIT

---

Now that you are self aware of your personality, let us look at how you can apply it at your workplace and make better career decisions. A suitable workplace helps you to perform to the fullest.



# Workplace Fit Parameters

## Workplace Traits

These are traits which are exhibited by you while at workplace. They highly govern your way of working. You can practically notice them while at work.

## Interview Cracker Corner

Based on your personality traits you can uniquely add value to your organisation or workplace. There are things which only you can do the best and not anybody else. Thus, they differentiate you from other candidates at an interview.

## Issues you may face at workplace

Referring to difficulties stated earlier, these are few problems that may arise at your workplace.

## Things you need at workplace

These are few requirements, if satisfied will help you perform brilliantly. You should always seek a workplace that has all these things or make sure that you get them for yourself.

## Things to be taken care of

These are some things you should keep in mind while working. They will make you conscious of your own decisions.

## Choosing the correct path

This includes tips you can consider while choosing a career path. They are formulated by including all above parameters.

# Dominant Workplace Traits

You understand feelings and take pleasure in assisting your boss or co-workers. You feel proud to be in need by others

*and the appreciation in their success. Relationships matter to you at work. You are motivated by your personal growth and desire to go beyond what is needed at work and office.*



REPORT

"A healthy workplace is the best recipe of success"

## Interview Cracker Corner

### Strength

1. Caring, Supportive
2. Interpersonal Skills
3. Creates a feel-good atmosphere

### Application to workplace

Able to understand others' issues and respond cordially, act as good mentors  
Easily build up interpersonal relations  
Makes sure everyone is included and comfortable



## Needs at Workplace

- Looking attractive/making your surroundings likable to others
- Being appreciated and liked





DISCOVER  
A BIT  
MORE  
ABOUT  
YOU!

# Pre-dominant Workplace Traits

You are generally motivated by autonomy, ability, and security. You are a good negotiator and you try to resolve issues. You are a questioner and a lover of uncertainty. You are likely to work in a team or a group. You are likely to be a problem solver. You are likely to be a team player. You are likely to be a team player. You are likely to be a team player.

## Other workplace strengths you may exhibit

- You are careful and less likely to fall in traps or committing errors
- You are questioning and suspicious and get to the truth/root cause of something, this helps in detailed analysis
- You are questioning and suspicious and get to the truth/root cause of something, this helps in detailed analysis
- You are loyal and this makes you a dutiful and dependable worker
- You are witty and this helps you to make friends and charm them
- You are a problem solver and able to comprehend data or lots of



## Additional needs

- Being treated well, feel worthy
- Being treated well, feel worthy
- Being treated well, feel worthy
- Being treated well, feel worthy
- Being treated well, feel worthy
- Being treated well, feel worthy
- Being treated well, feel worthy
- Being treated well, feel worthy



## Issues that may affect you pre-dominantly

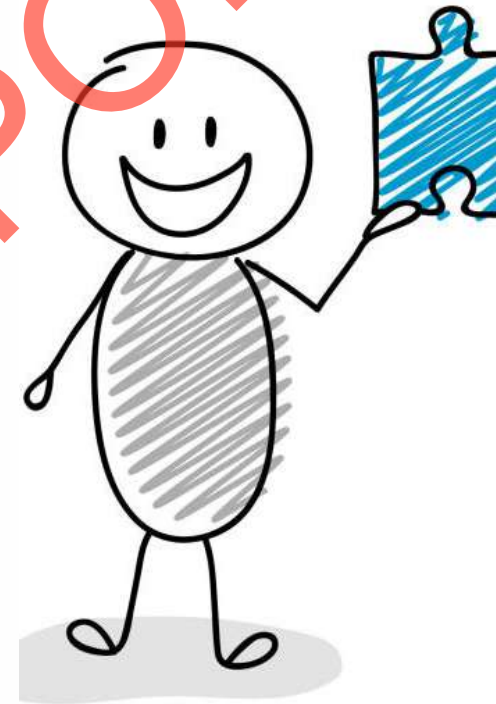
- To have fears and be anxious
- To be too cautious and hesitant

- Being treated well, but poorly
- Fitting in socially
- Able to make a difference in others' lives

"Happiness inspires productivity,  
Be happily productive"

Your pre-dominant traits may affect your career decisions

You are motivated by genuine feelings of compassion and urge to help others. You may be an important influence to others. You should opt for careers that require you to interact with people personally, assessing their needs and helping them. Careers where relationships, feelings are important to you.



You may also take care of the following, if these traits pre-dominantly exist in you:

- You give your own needs while trying to help others
- You may go out of your way to help others and sometimes invade their personal space
- You are emotionally driven and follow interpersonal rules and
- You give your own needs while trying to help others
- You may go out of your way to help others and sometimes invade their personal space
- You are emotionally driven and follow interpersonal rules and



# Knowing your decision-making process



## Core values impacting career decisions

- People skills
- Reliability
- Perceptiveness
- Expressiveness
- Problem-Solving



## Suggested careers with matching traits

- Actor
- Journalist
- Writer



## Lessons learned

- It is necessary to agree on what other people tell you.
- Identify and focus on your own needs before others.
- Do not try to keep in touch with yourself.
- Receive help from others.





# Working Style

Working style - It refers to the way a person likes to work, the type of work they want to do or elements with which they want to work

# Working Style

There are various working styles, knowledge of which is crucial to select the right career for yourself. Let us take a brief introduction of them.



**Physical-** working with real world objects like machines, plants, animals etc. using physical strength



**Informative-** working with theories, ideas, etc using mental ability



**Creative-** working to design or create using imagination and creativity



**Interactive-** working with people to communicate and assist them



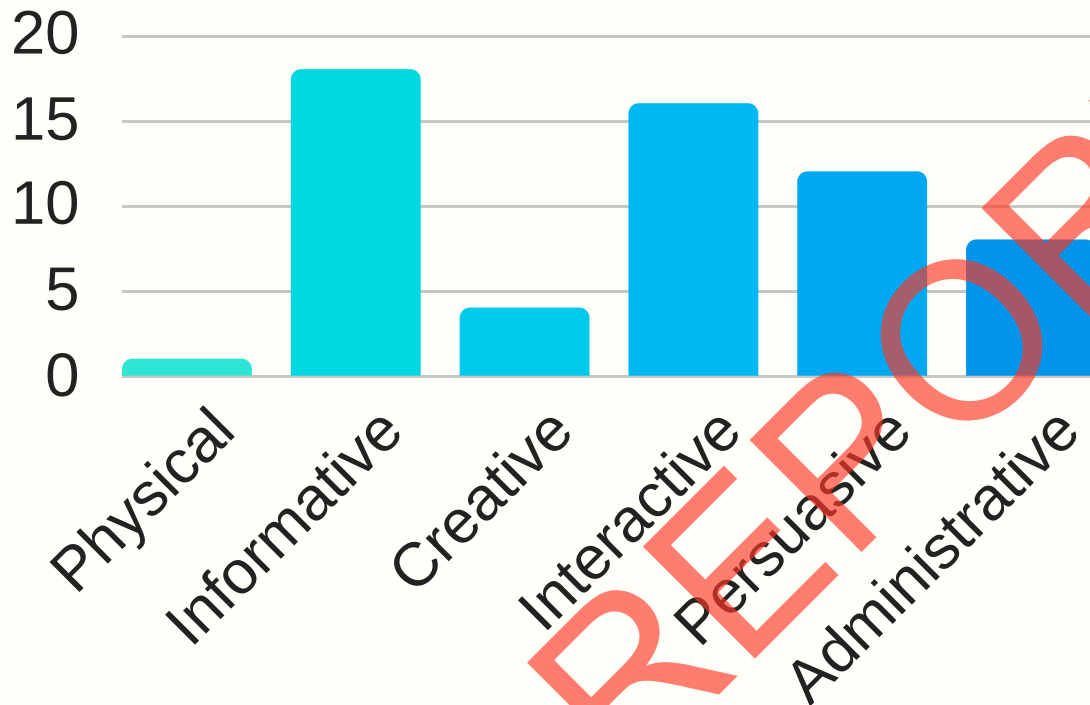
**Persuasive-** working with people to influence them and derive personal gain



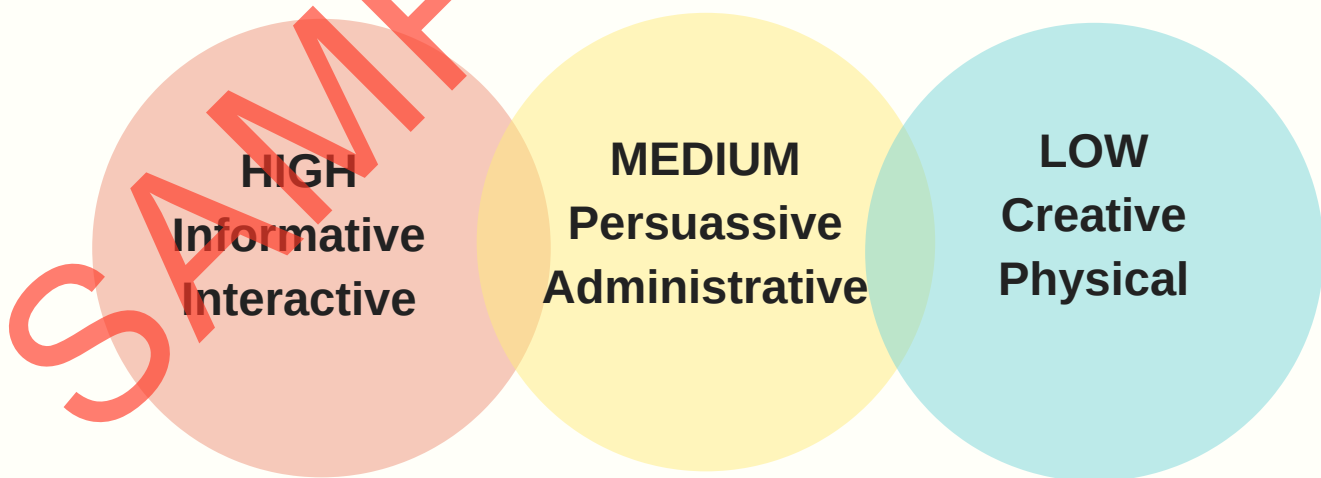
**Administrative-** working with data, information and records to organize and preserve them



Now, we evaluated your response and this is the result



The working style assessment shows that :



Now let us look at the dominant working styles in you, that is **Informative** and **Interactive**, in detail.

# Informative

You are a scholarly person with a reserved personality and may have special skills to

think, investigate, research, analyze, evaluate, observe, ask questions & learn. You may like to work with theories, abstract ideas, logic, and concepts. You may be interested in a well-organized and structured working system. You may be passionate about discovering ideas, experimenting, computing and solving problems.

**Unique Ability:** abstract thinking, investigative and analytical



**Strength:** working with your brain



**You need around you:** high-organized and abstract ideas



**Purpose to be fulfilled:** discover ideas, ask questions and learn



**Work behavior:** scholarly



Some career examples where this style works. Do you love any of these or other similar career options? Go for it!

Engineers, Analysts, Archaeologists, Surgeons, Geo scientists, Chemists, Nuclear Medicine Technologists, Atmospheric and Space Scientists, Physicists, Dentists, Medical Scientists, Forensic Science Technicians, Biochemists and Biophysicists, Professors, Diagnostic Medical Sonographers, Clinical Counseling, and School Psychologists, Mathematicians, Survey Researchers,

# Interactive

You are a friendly person with a warm personality and may have special abilities to

think, investigate, research, analyze, evaluate, observe, ask questions & learn. You may like to work with theories, abstract ideas, logic, and concepts. You may be interested in a well-organized and structured working system. You may be particularly good at discussing ideas, experimenting, comparing and solving problems.

**Unique Ability:** working with your brain

hello!

**Strength:** working with your heart (helping)

**You need around you:** people

**Purpose to be fulfilled:** working with your brain

**Work behavior:** logic, information and abstract ideas

**Some career examples where this style works. Do you love any of these or other similar career options? Go for it!**

Engineers, Analysts, Archaeologists, Surgeons, Geo-scientists, Chemists, Nuclear Medicine Technologists, Atmospheric and Space Scientists, Physicists, Dentists, Medical Scientists, Forensic Science Technicians, Biochemists and Biophysicists, Professors, Diagnostic Medical Sonographers, Clinical Counseling, and School Psychologists, Mathematicians, Survey Researchers,

# WHAT HAVE WE LEARNT?

**SAMPLE REPORT**

*(The following text is heavily blurred and illegible due to a watermark overlay.)*

**Now that you are self-aware, get ready to pick the right opportunities for yourself!**



# BE SMARTER THAN YOUR PEERS

MyWays facilitates you to be one step ahead in choosing the right opportunities for yourself

Follow us on social media using **#FollowingMyWays** for regular updates



[www.facebook.com/followingmyways](http://www.facebook.com/followingmyways)



[www.instagram.com/followingmyways](http://www.instagram.com/followingmyways)



[www.linkedin.com/company/followingmyways](http://www.linkedin.com/company/followingmyways)



[www.twitter.com/followingmyways](http://www.twitter.com/followingmyways)

For any queries regarding the report or otherwise kindly email us at [info@myways.in](mailto:info@myways.in)



#FollowingMyWays